

30. Figure 5-13 is a diagram of the articulated skeleton in anatomical position. Identify all bones or groups of bones by writing the correct labels at the end of the leader lines. Then, select two different colors for the bones of the axial and appendicular skeletons and use them to color in the coding circles and corresponding structures in the diagram.

Axial skeleton

Appendicular skeleton

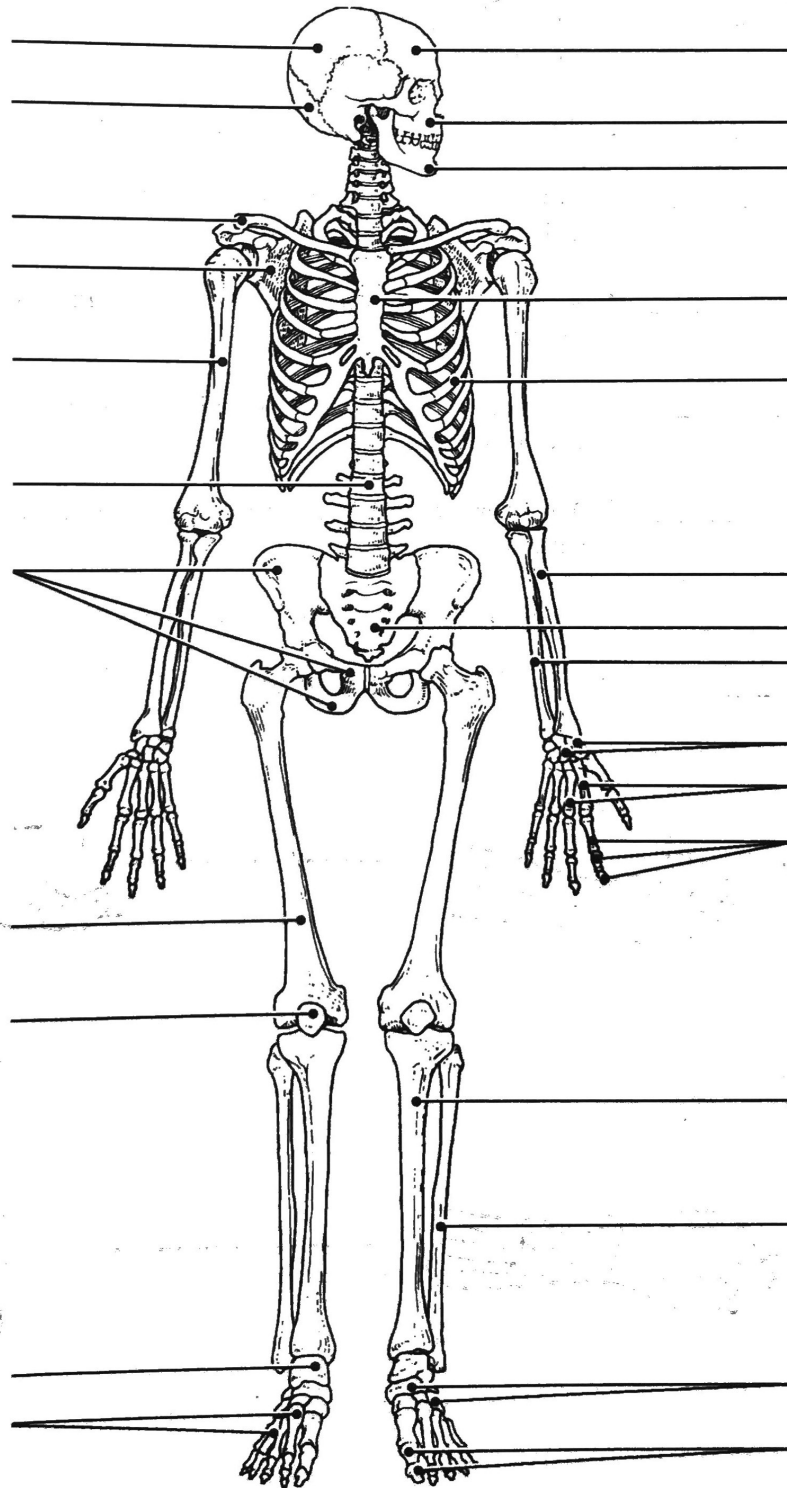


Figure 5-13